

ABOUT US



We are a LLC company based in Houston, with more than 10 years of experience providing **GLOBAL SERVICES AND PROCUREMENT** to Services Companies and Energy Operator companies in the US, Mexico and South America. We pride ourselves on our resourceful network , prompt approach in finding the best and customized solutions to our clients. We commit ourselves in working with all proper and reliable established procedures to insure overall client's satisfaction.

Our strategic alliances with the best manufacturing companies give us the strength to give our customers the best service and product. Our extensive line of products complies with the highest quality, **best prices and best lead time** to satisfy all customer requirements with high ethical standards and transparency to guarantee total client satisfaction.

All what you need for your Upstream, Midstream and Downstream operation.

Drilling Rig Package

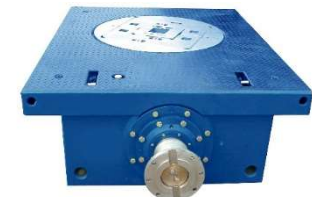
- ❖ SCR Skid Mounted Drilling Rig
- ❖ VFD Skid Mounted Drilling Rig
- ❖ Mechanical Drilling Rig
- ❖ Trailer Mounted Drilling Rig
- ❖ Truck Mounted Rig
- ❖ Truck Mounted Rig Accessories



Drilling Equipment

JG Oil & Gas provides complete a line of:

- ❖ Hook-Block Combo
- ❖ Swivels
- ❖ Master Bushing
- ❖ Roller Kelly Bushing
- ❖ Casing Bushing
- ❖ Mechanical Drawworks
- ❖ DC Drawworks
- ❖ AC Drawworks
- ❖ Top Drive.
- ❖ Open Face Mast
- ❖ Telescoping Mast
- ❖ Box-on-Box Substructure
- ❖ Self Elevating Substructure
- ❖ Crown Blocks
- ❖ Traveling Blocks
- ❖ Hooks



Mud Pumps

We have new and refurbished parts available as well as unitized pump packages.

- ❖ Valves
- ❖ Seats
- ❖ Pistons
- ❖ Ceramic Liners
- ❖ Bi Metal Liners
- ❖ Zirconia Liners
- ❖ Fluis Ends
- ❖ Liner cooling
- ❖ Vibrator Hoses
- ❖ Pulsation Dampeners
- ❖ Gaskets



Handling Tools

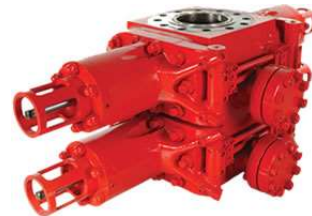
- ❖ Hydraulic Catheads
- ❖ Hydraulic Power Unit
- ❖ Manual Tongs
- ❖ Mousehole Make-Up Tool
- ❖ Air Hoist & Hydraulic Winch
- ❖ Wire Line Unit
- ❖ Safety Hanfles
- ❖ Safety Clamps
- ❖ Slips
- ❖ Elevators
- ❖ Elevator Links
- ❖ Drill Pipe Power Tong
- ❖ Casing Power Tong



Well Control Equipment

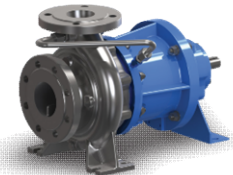
We have new and refurbished BOP equipment and parts for most manufacturers and models.

- ❖ Annular BOP
- ❖ Single Ram BOP
- ❖ Double Ram BOP
- ❖ Drilling Spool & DSA
- ❖ Choke Manifold
- ❖ Kill Manifold
- ❖ BOP Closing Unit
- ❖ Choke Control Panel
- ❖ BOP Test Unit
- ❖ BOP Handling Unit
- ❖ Koomey Accumulator
- ❖ Crosses and tees
- ❖ Spools
- ❖ Door Seals
- ❖ Ram assemblies and Packers



Mud System & Solid Control Equipment

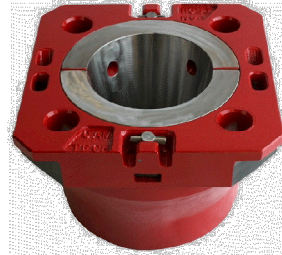
- ❖ Mud Tanks
- ❖ Shale Shakers
- ❖ Desanders
- ❖ Desilters
- ❖ Mud Cleaner
- ❖ Centrifuge
- ❖ Vacuum Degasser
- ❖ Centrifugal Pump
- ❖ Mud Gas Separator
- ❖ Shaker Screens
- ❖ Mud Hoppers
- ❖ Mud Buckets
- ❖ Mud Guns
- ❖ Mud Agitators



Rotary and Traveling Equipment parts

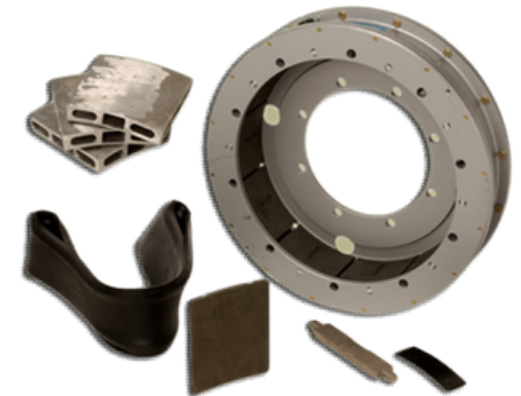
We keep a supply of rotary and traveling equipment parts.

- ❖ Bearings
- ❖ Seals
- ❖ Pins
- ❖ Roller assy
- ❖ Traveling Blocks
- ❖ Washpipe
- ❖ Kelly square and hexagonal
- ❖ Kelly Drive Bushings
- ❖ Rotary Insert bowls
- ❖ Rotary bushing
- ❖ Rotary tables
- ❖ Rotary hose
- ❖ Crown sheaves
- ❖ Link and bails



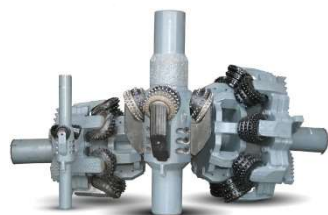
Drawworks

- ❖ Chain belts
- ❖ Clutches
- ❖ Drawwork blocks
- ❖ Brake bands
- ❖ Brake rims
- ❖ Bearings and seal
- ❖ Brake pads



Downhole Tools

- ❖ Taper Taps
- ❖ Die Collars
- ❖ Fishing Spears
- ❖ Overshots
- ❖ Junk Baskets
- ❖ Reverse Circulation Junk Baskets
- ❖ Fishing Magnets
- ❖ Cutting Type Fishing Tools
- ❖ Hydraulic & Mechanical
- ❖ Internal & External Cutters
- ❖ Back Off Tools
- ❖ Fishing Jars
- ❖ Stabilizers
- ❖ Reamers
- ❖ Subs



Drill String & Tubulars OCTG

- ❖ Square Kelly
- ❖ Hexagonal Kelly
- ❖ Drill Pipe
- ❖ Heavy Weight Drill Pipe
- ❖ Spiral Drill Collar
- ❖ NON Magnetic Drill Collar
- ❖ Standard Tubing
- ❖ Tubing
- ❖ Casing
- ❖ Line Pipe
- ❖ Industrial Pipe
- ❖ Sucker rods.



VALVES, FLANGES AND ACCESORIES



VALVES.

API 6D, API-6FA, API-598, API-600, API602, API607, ASME B16.5, ASME B16.34, B16.10, B16.25

- ❖ Gate
- ❖ Check
- ❖ Ball
- ❖ Plug
- ❖ Butterfly
- ❖ Globe



FLANGES

ASTM A105, A105N, A694 GR.F52, A181, GRF1, F11,F22,F5,F9,F91; MONEL 400,500. INCONEL 600, 625. INCOLLOY 800,825. HASTELLOY C22,C276. ANSI B16.5, ANSI B16.47, API 605, MSS SP44, MR 01-75/ISO 15156. AP1 6-A/API 6B.

- ❖ Welding Neck
- ❖ Blind
- ❖ Adapter
- ❖ Threaded
- ❖ Companion
- ❖ Slip on
- ❖ Nipoflange
- ❖ Lap joint
- ❖ Long neck
- ❖ Anchor



STEEL AND SPECIAL ALLOYS

- AISI 4145H
- AISI 4140 – L80
- AISI 4130
- AISI 4330V
- NON-MAGNETIC STEELS

- BRASS
- BRONZE
- COPPER ALLOYS



Other Products



- **Drilling Rig Package**
- **Drilling Equipment and parts**
 - **Mud Pumps**
 - **Well Control Equipment**
 - **Handling Tool**
 - **Mud System and Solid Control**
 - **Drawworks**
 - **Pneumatic/Hydraulic**
 - **Rotary/Traveling**
 - **Top Drive**
 - **Rig Expendables**
- **Drill Pipe and OCTG**
- **BHA and Downhole Tools**
- **Valves, Flanges and accesories**
- **Steel and Special Alloys**
- **Instrumentation**
- **Torque Rings**
- **Electrical components**
- **Instrumentation**
- **Cables**
- **Safety equipments**
- **Gloves**
- **Chemical Products**
- **Lubricants**
- **Hoses**
- **Electronics**

www.jgoil-gas.com

Rev 2. March 2020

Our clients



HALLIBURTON



www.jgoil-gas.com

LOCATIONS



MAIN OFFICE

Houston, Texas- USA
22503 Katy Freeway,
Suite 65 Katy, TX. 77450
Tel: +1 786-585-5594

OFFICE

Reynosa, Tamaulipas - MEXICO
Carretera Monterrey Km 202.
Tel: +52 899 468 9588

supply@jgoil-gas.com

www.jgoil-gas.com